

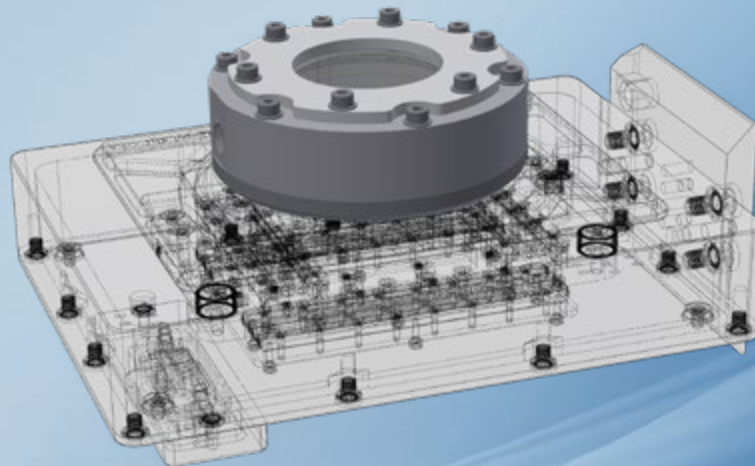
# microPREP™ PRO

## ADD-ON CONTAINMENT FOR MOTORIZED STAGE

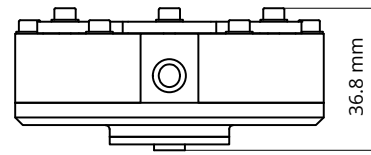
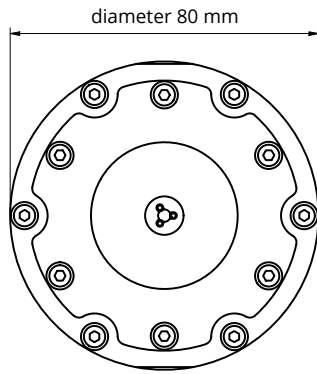
The containment add-on has been developed for users that need to handle samples under special environment conditions from time to time. It can simply be added to the motorized stage. If not needed the add-on is removed within minutes as well. As with the motorized stage, samples are preferably placed either on a SEM stub/mount or directly on the platform. The containment add-on is suitable for sample sizes up to a diameter of 30 mm and a height of 10 mm. This add-on is perfectly suited for sample preparation in oxygen-free atmospheres or low-vacuum conditions.

### APPLICATION IDEAS

- XL-Chunks and related shapes
- Milling processes (box and cross-sections)
- Pillars/needles or even pillar arrays
- Laser polishing

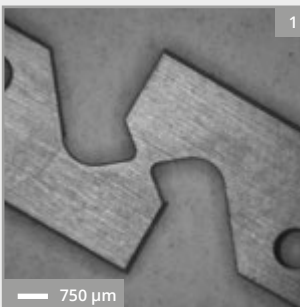


## Technical Data

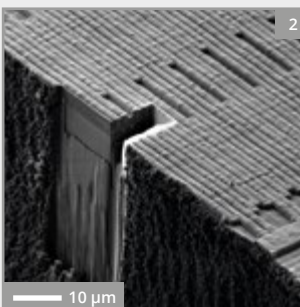


Physical Dimensions	80 mm x 80 mm x 36.8 mm (3.15" x 3.15" x 1.45")
Weight	0.35 kg
Possible Sample Sizes	3.2 mm (1/8") SEM/FIB short pin stubs/mounts Diameter < 30 mm (1.18") Height < 10 mm (0.39")
Max. Load Capacity	Up to 5 N
Maximum Tilt Angle of Stage	± 10°
Locking Screws	M3x6 (wrench width: 2.5)
Entry Thread for Gas Tubes	G 1/8"

## Application Ideas



With the general functionality of the motorized stage it is possible to get the most out of the microRPEP™ PRO. Almost all processes can be performed with this stage. Due to the pin fitting any 3.2 mm (1/8") pin stub or mount for SEM/FIB systems can be used. This opens up further possibilities in the field of sample preparation. The motorized stage was designed to prepare complex structures and can also manufacture geometries with undercuts. The stage is also best suited for cutting tensile test or cantilever specimen (*image 1*). Moreover, the motorized stage can be used to carry out cross-sections and box-millings. These tasks can also be easily performed on several positions on the same sample (*image 2*).



The containment add-on makes the motorized stage suitable for applications in which additional protection for the sample or the environment are needed. Furthermore, it allows to treat samples under special conditions such as low-vacuum or in oxygen-free atmospheres. The containment also makes this stage suitable for applications with radioactive and otherwise hazardous materials.

The convenient size of the stage allows to transfer the whole stage - with the sample still mounted in the containment - to a glovebox or other protected areas without risking contamination.

• and  
• many  
• more

Rev. 2020-09 Changes in accordance to technical progress are reserved.